

Game no. 11607/237  
Istanbul  
Kasımpaşa Spor Kompleksi

18.03.2017 18:40  
(Local time)

### OFFICIAL STATISTICS

## 10 - 8

(10-8)

#### DELOITTE (DEL)

Head coach: EFE NALBANTOĞLU

No.	Name	Min	FG		2P FG		3P FG		FT		Reb			AS	TO	ST	BS	PF			PTS
			M/A	%	M/A	%	M/A	%	M/A	%	RO	RD	Tot					C	D	+/-	
2	Berk Piroğlu	DNP																			
6	Emin Badem	DNP																			
7	Yiğit Kılınc	DNP																			
*8	Tunca Cingöz	10:00	0/6	0,0	0/1	0,0	0/5	0,0	1/3	33,3	0	0	0	0	0	0	0	0	2	+2	1
*10	Sinan Nail Gebendirisli	10:00	1/6	16,7	1/1	100,0	0/5	0,0	0/0	0,0	0	6	6	1	1	0	1	1	0	+2	2
*11	Sercan Pekcan	10:00	1/1	100,0	1/1	100,0	0/0	0,0	0/0	0,0	1	3	4	0	0	0	0	1	0	+2	2
*12	Doruk Dövüşken	10:00	0/0	0,0	0/0	0,0	0/0	0,0	0/0	0,0	0	0	0	3	0	1	0	0	1	+2	0
17	Hakan Kenavlı	DNP																			
*21	Kadir Can	10:00	2/4	50,0	1/2	50,0	1/2	50,0	0/0	0,0	0	3	3	0	0	0	0	1	0	+2	5
Team/Coach											1	0	1					0			
<b>Totals</b>			<b>4/17</b>	<b>23,5</b>	<b>3/5</b>	<b>60,0</b>	<b>1/12</b>	<b>8,3</b>	<b>1/3</b>	<b>33,3</b>	<b>2</b>	<b>12</b>	<b>14</b>	<b>4</b>	<b>1</b>	<b>1</b>	<b>1</b>	<b>3</b>	<b>3</b>		<b>10</b>

#### SCHNEIDER ELECTRIC (SCE)

Head coach: AHMET ÇINAR

No.	Name	Min	FG		2P FG		3P FG		FT		Reb			AS	TO	ST	BS	PF			PTS
			M/A	%	M/A	%	M/A	%	M/A	%	RO	RD	Tot					C	D	+/-	
*1	Yusuf Emre Çakmak	10:00	0/2	0,0	0/0	0,0	0/2	0,0	0/0	0,0	0	1	1	0	0	0	0	0	1	-2	0
*12	Merih Çağrı Sağlam	10:00	1/5	20,0	1/2	50,0	0/3	0,0	0/0	0,0	0	3	3	0	0	0	0	1	0	-2	2
*13	Hakan Şençicek	10:00	0/4	0,0	0/4	0,0	0/0	0,0	4/4	100,0	1	5	6	1	0	0	0	0	2	-2	4
14	Erdem Yesilyurt	DNP																			
30	Ufuk Doğan	04:13	0/2	0,0	0/2	0,0	0/0	0,0	0/0	0,0	0	1	1	1	0	0	0	0	0	+0	0
*33	Mustafa Copur	10:00	0/2	0,0	0/1	0,0	0/1	0,0	0/0	0,0	1	0	1	0	0	0	0	2	0	-2	0
35	Aybars Doker	DNP																			
*55	Emre Yılmaz	05:47	1/2	50,0	1/1	100,0	0/1	0,0	0/0	0,0	1	1	2	0	1	0	0	0	0	-2	2
99	Onur Gürhan	DNP																			
Team/Coach											0	0	0					0			
<b>Totals</b>			<b>2/17</b>	<b>11,8</b>	<b>2/10</b>	<b>20,0</b>	<b>0/7</b>	<b>0,0</b>	<b>4/4</b>	<b>100,0</b>	<b>3</b>	<b>11</b>	<b>14</b>	<b>2</b>	<b>1</b>	<b>0</b>	<b>0</b>	<b>3</b>	<b>3</b>		<b>8</b>

#### Scoring by 5 minutes intervals

	Q1	Q2	Q3	Q4
DEL	4   10			
SCE	2   8			

	DEL	SCE
Points from turnovers	0	2
Points in the paint	4	2
Second chance points	2	0
Fast break points	0	0
Bench points	0	0

	DEL	SCE
Biggest lead	3	2
Biggest scoring run	5-0 (9-6)	4-0 (4-6)
Lead changes	2	
Times tied	4	
Time Leading	03:50	00:20

#### Legend:

<b>Min</b> Minutes played	<b>M/A</b> Made/attempts	<b>Reb</b> Rebounds	<b>AS</b> Assists	<b>TO</b> Turnovers
<b>*</b> Starters	<b>%</b> Shooting percentage	<b>RD</b> Defensive rebounds	<b>PF</b> Personal fouls	<b>ST</b> Steals
<b>DNP</b> Did not play	<b>FT</b> Free throws	<b>RO</b> Offensive rebounds	<b>C</b> Committed fouls	<b>BS</b> Blocked shots
<b>FG</b> Field goals	<b>PTS</b> Points scored	<b>Tot</b> Total rebounds	<b>D</b> Drawn fouls	<b>+/-</b> Net points while on court

Game no. 11607/237  
Istanbul  
Kasımpaşa Spor Kompleksi

18.03.2017 18:40  
(Local time)

### OFFICIAL STATISTICS

## 27 - 22

(10-8, 17-14)

#### DELOITTE (DEL)

Head coach: EFE NALBANTOĞLU

No.	Name	Min	FG		2P FG		3P FG		FT		Reb			AS	TO	ST	BS	PF			PTS									
			M/A	%	M/A	%	M/A	%	M/A	%	RO	RD	Tot					C	D	+/-										
2	Berk Piroğlu	DNP																												
6	Emin Badem	02:49	2/5	40,0	1/2	50,0	1/3	33,3	1/1	100,0	1	0	1	0	0	0	0	0	1	-2	6									
7	Yiğit Kılınç	09:25	1/3	33,3	0/0	0,0	1/3	33,3	0/0	0,0	0	2	2	0	0	0	0	2	0	+3	3									
*8	Tunca Cingöz	17:46	2/10	20,0	0/2	0,0	2/8	25,0	1/3	33,3	0	0	0	2	2	0	0	1	2	+7	7									
*10	Sinan Nail Gebendirisli	17:46	2/9	22,2	2/2	100,0	0/7	0,0	0/0	0,0	0	10	10	1	1	0	2	2	0	+7	4									
*11	Sercan Pekcan	20:00	1/2	50,0	1/1	100,0	0/1	0,0	0/2	0,0	1	5	6	1	0	0	0	2	1	+5	2									
*12	Doruk Dövüşken	12:14	0/0	0,0	0/0	0,0	0/0	0,0	0/0	0,0	0	1	1	4	0	2	0	0	1	+0	0									
17	Hakan Kenavlı	DNP																												
*21	Kadir Can	20:00	2/5	40,0	1/2	50,0	1/3	33,3	0/0	0,0	0	5	5	1	2	1	0	1	0	+5	5									
Team/Coach											1	0	1																	
<b>Totals</b>			<b>10/34</b>	<b>29,4</b>	<b>5/9</b>	<b>55,6</b>	<b>5/25</b>	<b>20,0</b>	<b>2/6</b>	<b>33,3</b>	<b>3</b>	<b>23</b>	<b>26</b>	<b>9</b>	<b>5</b>	<b>3</b>	<b>2</b>	<b>8</b>	<b>5</b>		<b>27</b>									

#### SCHNEIDER ELECTRIC (SCE)

Head coach: AHMET ÇINAR

No.	Name	Min	FG		2P FG		3P FG		FT		Reb			AS	TO	ST	BS	PF			PTS								
			M/A	%	M/A	%	M/A	%	M/A	%	RO	RD	Tot					C	D	+/-									
*1	Yusuf Emre Çakmak	17:11	0/3	0,0	0/1	0,0	0/2	0,0	0/0	0,0	0	2	2	0	0	0	0	0	2	-7	0								
*12	Merih Çağrı Sağlam	17:53	3/9	33,3	2/5	40,0	1/4	25,0	0/0	0,0	0	3	3	0	0	0	0	1	0	-9	7								
*13	Hakan Şenççek	20:00	1/9	11,1	1/9	11,1	0/0	0,0	5/6	83,3	1	10	11	2	2	0	0	1	3	-5	7								
14	Erdem Yesilyurt	04:56	0/0	0,0	0/0	0,0	0/0	0,0	1/2	50,0	0	1	1	2	0	1	0	0	1	+6	1								
30	Ufuk Doğan	04:13	0/2	0,0	0/2	0,0	0/0	0,0	0/0	0,0	0	1	1	1	0	0	0	0	0	+0	0								
*33	Mustafa Copur	14:26	1/3	33,3	0/1	0,0	1/2	50,0	0/0	0,0	1	0	1	0	1	0	0	2	0	+4	3								
35	Aybars Doker	05:34	0/2	0,0	0/2	0,0	0/0	0,0	0/0	0,0	0	3	3	0	0	0	0	0	1	-9	0								
*55	Emre Yılmaz	15:47	2/6	33,3	2/4	50,0	0/2	0,0	0/0	0,0	3	1	4	1	1	1	0	1	1	-5	4								
99	Onur Gürhan	DNP																											
Team/Coach											0	0	0																
<b>Totals</b>			<b>7/34</b>	<b>20,6</b>	<b>5/24</b>	<b>20,8</b>	<b>2/10</b>	<b>20,0</b>	<b>6/8</b>	<b>75,0</b>	<b>5</b>	<b>21</b>	<b>26</b>	<b>6</b>	<b>4</b>	<b>2</b>	<b>0</b>	<b>5</b>	<b>8</b>		<b>22</b>								

Scoring by 5 minutes intervals	DEL	Q1		Q2		Q3		Q4	
		4	10	21	27				
SCE	2	8	10	22					

	DEL	SCE
Points from turnovers	9	9
Points in the paint	8	8
Second chance points	5	2
Fast break points	0	3
Bench points	9	1

	DEL	SCE
Biggest lead	11	2
Biggest scoring run	8-0 (21-10)	6-0 (24-20)
Lead changes	2	
Times tied	4	
Time Leading	13:50	00:20

#### Legend:

<b>Min</b> Minutes played	<b>M/A</b> Made/attempts	<b>Reb</b> Rebounds	<b>AS</b> Assists	<b>TO</b> Turnovers
<b>*</b> Starters	<b>%</b> Shooting percentage	<b>RD</b> Defensive rebounds	<b>PF</b> Personal fouls	<b>ST</b> Steals
<b>DNP</b> Did not play	<b>FT</b> Free throws	<b>RO</b> Offensive rebounds	<b>C</b> Committed fouls	<b>BS</b> Blocked shots
<b>FG</b> Field goals	<b>PTS</b> Points scored	<b>Tot</b> Total rebounds	<b>D</b> Drawn fouls	<b>+/-</b> Net points while on court

Game no. 11607/237  
Istanbul  
Kasımpaşa Spor Kompleksi

18.03.2017 18:40  
(Local time)

### OFFICIAL STATISTICS

## 41 - 33

(10-8, 17-14, 14-11)

#### DELOITTE (DEL)

Head coach: EFE NALBANTOĞLU

No.	Name	Min	FG		2P FG		3P FG		FT		Reb			AS	TO	ST	BS	PF			PTS
			M/A	%	M/A	%	M/A	%	M/A	%	RO	RD	Tot					C	D	+/-	
2	Berk Piroğlu	DNP																			
6	Emin Badem	12:49	6/10	60,0	3/5	60,0	3/5	60,0	1/1	100,0	1	1	2	0	2	1	0	1	3	+1	16
7	Yiğit Kılınç	09:25	1/3	33,3	0/0	0,0	1/3	33,3	0/0	0,0	0	2	2	0	0	0	0	2	0	+3	3
*8	Tunca Cingöz	27:33	2/12	16,7	0/2	0,0	2/10	20,0	1/3	33,3	0	1	1	3	5	1	0	1	2	+10	7
*10	Sinan Nail Gebendirisli	27:46	2/9	22,2	2/2	100,0	0/7	0,0	0/0	0,0	0	12	12	2	1	1	2	3	0	+10	4
*11	Sercan Pekcan	30:00	1/3	33,3	1/2	50,0	0/1	0,0	0/4	0,0	2	6	8	2	1	2	1	2	2	+8	2
*12	Doruk Dövüşken	12:27	0/0	0,0	0/0	0,0	0/0	0,0	0/0	0,0	0	1	1	4	0	2	0	0	1	+0	0
17	Hakan Kenavlı	DNP																			
*21	Kadir Can	30:00	3/10	30,0	1/3	33,3	2/7	28,6	1/2	50,0	0	8	8	4	2	1	0	2	1	+8	9
Team/Coach											1	0	1							0	
<b>Totals</b>			<b>15/47</b>	<b>31,9</b>	<b>7/14</b>	<b>50,0</b>	<b>8/33</b>	<b>24,2</b>	<b>3/10</b>	<b>30,0</b>	<b>4</b>	<b>31</b>	<b>35</b>	<b>15</b>	<b>11</b>	<b>8</b>	<b>3</b>	<b>11</b>	<b>9</b>		<b>41</b>

#### SCHNEIDER ELECTRIC (SCE)

Head coach: AHMET ÇINAR

No.	Name	Min	FG		2P FG		3P FG		FT		Reb			AS	TO	ST	BS	PF			PTS
			M/A	%	M/A	%	M/A	%	M/A	%	RO	RD	Tot					C	D	+/-	
*1	Yusuf Emre Çakmak	23:17	0/3	0,0	0/1	0,0	0/2	0,0	0/0	0,0	0	3	3	0	0	0	0	1	2	-2	0
*12	Merih Çağrı Sağlam	24:24	4/10	40,0	3/6	50,0	1/4	25,0	0/0	0,0	0	4	4	1	1	2	0	3	0	-13	9
*13	Hakan Şenççek	30:00	2/15	13,3	2/14	14,3	0/1	0,0	5/6	83,3	3	14	17	2	4	0	1	1	3	-8	9
14	Erdem Yesilyurt	10:49	1/2	50,0	1/1	100,0	0/1	0,0	1/2	50,0	0	1	1	3	0	1	0	1	1	+0	3
30	Ufuk Doğan	07:42	1/4	25,0	1/4	25,0	0/0	0,0	1/2	50,0	0	1	1	2	0	0	0	0	2	+1	3
*33	Mustafa Copur	19:24	1/4	25,0	0/2	0,0	1/2	50,0	0/0	0,0	2	0	2	1	3	0	0	2	0	+2	3
35	Aybars Doker	11:41	1/5	20,0	1/4	25,0	0/1	0,0	0/0	0,0	0	3	3	0	2	0	0	0	1	-7	2
*55	Emre Yılmaz	20:12	2/7	28,6	2/4	50,0	0/3	0,0	0/0	0,0	3	2	5	1	1	1	0	1	2	-13	4
99	Onur Gürhan	02:31	0/0	0,0	0/0	0,0	0/0	0,0	0/0	0,0	0	2	2	1	0	0	0	0	0	+0	0
Team/Coach											0	0	0							0	
<b>Totals</b>			<b>12/50</b>	<b>24,0</b>	<b>10/36</b>	<b>27,8</b>	<b>2/14</b>	<b>14,3</b>	<b>7/10</b>	<b>70,0</b>	<b>8</b>	<b>30</b>	<b>38</b>	<b>11</b>	<b>11</b>	<b>4</b>	<b>1</b>	<b>9</b>	<b>11</b>		<b>33</b>

#### Scoring by 5 minutes intervals

	Q1		Q2		Q3		Q4	
DEL	4	10	21	27	37	41		
SCE	2	8	10	22	24	33		

	DEL	SCE
Points from turnovers	15	11
Points in the paint	10	16
Second chance points	5	2
Fast break points	3	7
Bench points	19	8

	DEL	SCE
Biggest lead	13	2
Biggest scoring run	10-0 (37-24)	6-0 (24-20)
Lead changes	2	
Times tied	4	
Time Leading	23:50	00:20

#### Legend:

<b>Min</b> Minutes played	<b>M/A</b> Made/attempts	<b>Reb</b> Rebounds	<b>AS</b> Assists	<b>TO</b> Turnovers
<b>*</b> Starters	<b>%</b> Shooting percentage	<b>RD</b> Defensive rebounds	<b>PF</b> Personal fouls	<b>ST</b> Steals
<b>DNP</b> Did not play	<b>FT</b> Free throws	<b>RO</b> Offensive rebounds	<b>C</b> Committed fouls	<b>BS</b> Blocked shots
<b>FG</b> Field goals	<b>PTS</b> Points scored	<b>Tot</b> Total rebounds	<b>D</b> Drawn fouls	<b>+/-</b> Net points while on court

Game no. 11607/237  
Istanbul  
Kasımpaşa Spor Kompleksi

18.03.2017 18:40  
(Local time)

### OFFICIAL STATISTICS

## 50 - 47

(10-8, 17-14, 14-11, 9-14)

#### DELOITTE (DEL)

Head coach: EFE NALBANTOĞLU

No.	Name	Min	FG		2P FG		3P FG		FT		Reb			AS	TO	ST	BS	PF			PTS
			M/A	%	M/A	%	M/A	%	M/A	%	RO	RD	Tot					C	D	+/-	
2	Berk Piroğlu	DNP																			
6	Emin Badem	22:49	7/14	50,0	3/5	60,0	4/9	44,4	1/1	100,0	2	2	4	0	2	1	0	2	4	-4	19
7	Yiğit Kılınc	09:25	1/3	33,3	0/0	0,0	1/3	33,3	0/0	0,0	0	2	2	0	0	0	0	2	0	+3	3
*8	Tunca Cingöz	33:42	3/17	17,6	1/6	16,7	2/11	18,2	1/3	33,3	0	2	2	3	6	1	0	1	3	+9	9
*10	Sinan Nail Gebendirisli	37:46	2/9	22,2	2/2	100,0	0/7	0,0	0/0	0,0	0	13	13	3	2	2	2	3	0	+5	4
*11	Sercan Pekcan	40:00	1/4	25,0	1/3	33,3	0/1	0,0	1/6	16,7	3	7	10	2	1	2	1	3	4	+3	3
*12	Doruk Dövüşken	16:18	0/0	0,0	0/0	0,0	0/0	0,0	0/0	0,0	0	2	2	6	0	2	0	1	1	-4	0
17	Hakan Kenavlı	DNP																			
*21	Kadir Can	40:00	4/16	25,0	2/7	28,6	2/9	22,2	2/4	50,0	0	9	9	4	2	1	0	3	2	+3	12
Team/Coach											3	1	4		0			0			
<b>Totals</b>			<b>18/63</b>	<b>28,6</b>	<b>9/23</b>	<b>39,1</b>	<b>9/40</b>	<b>22,5</b>	<b>5/14</b>	<b>35,7</b>	<b>8</b>	<b>38</b>	<b>46</b>	<b>18</b>	<b>13</b>	<b>9</b>	<b>3</b>	<b>15</b>	<b>14</b>		<b>50</b>

#### SCHNEIDER ELECTRIC (SCE)

Head coach: AHMET ÇINAR

No.	Name	Min	FG		2P FG		3P FG		FT		Reb			AS	TO	ST	BS	PF			PTS
			M/A	%	M/A	%	M/A	%	M/A	%	RO	RD	Tot					C	D	+/-	
*1	Yusuf Emre Çakmak	31:10	0/4	0,0	0/2	0,0	0/2	0,0	0/0	0,0	2	4	6	3	0	0	0	3	2	+1	0
*12	Merih Çağrı Sağlam	30:34	7/14	50,0	5/9	55,6	2/5	40,0	0/0	0,0	0	6	6	1	1	2	0	3	0	-9	16
*13	Hakan Şenççek	37:13	3/20	15,0	3/18	16,7	0/2	0,0	5/7	71,4	7	15	22	3	4	1	1	2	5	-6	11
14	Erdem Yesilyurt	12:56	1/3	33,3	1/2	50,0	0/1	0,0	1/2	50,0	0	2	2	3	1	1	0	1	2	+2	3
30	Ufuk Doğan	16:40	1/6	16,7	1/6	16,7	0/0	0,0	2/4	50,0	0	1	1	2	1	0	1	0	3	+6	4
*33	Mustafa Copur	27:03	1/5	20,0	0/2	0,0	1/3	33,3	0/0	0,0	2	1	3	1	3	0	0	2	0	+6	3
35	Aybars Doker	11:41	1/5	20,0	1/4	25,0	0/1	0,0	0/0	0,0	0	3	3	0	2	0	0	0	1	-7	2
*55	Emre Yılmaz	30:12	4/13	30,8	4/8	50,0	0/5	0,0	0/0	0,0	4	5	9	3	3	2	0	3	2	-8	8
99	Onur Gürhan	02:31	0/0	0,0	0/0	0,0	0/0	0,0	0/0	0,0	0	2	2	1	0	0	0	0	0	+0	0
Team/Coach											2	1	3		0			0			
<b>Totals</b>			<b>18/70</b>	<b>25,7</b>	<b>15/51</b>	<b>29,4</b>	<b>3/19</b>	<b>15,8</b>	<b>8/13</b>	<b>61,5</b>	<b>17</b>	<b>40</b>	<b>57</b>	<b>17</b>	<b>15</b>	<b>6</b>	<b>2</b>	<b>14</b>	<b>15</b>		<b>47</b>

#### Scoring by 5 minutes intervals

	Q1		Q2		Q3		Q4	
DEL	4	10	21	27	37	41	47	50
SCE	2	8	10	22	24	33	43	47

	DEL	SCE
Points from turnovers	16	13
Points in the paint	14	20
Second chance points	6	8
Fast break points	3	8
Bench points	22	9

	DEL	SCE
Biggest lead	13	2
Biggest scoring run	10-0 (37-24)	7-0 (47-45)
Lead changes	2	
Times tied	4	
Time Leading	33:50	00:20

#### Legend:

Min	Minutes played	M/A	Made/attempts	Reb	Rebounds	AS	Assists	TO	Turnovers
*	Starters	%	Shooting percentage	RD	Defensive rebounds	PF	Personal fouls	ST	Steals
DNP	Did not play	FT	Free throws	RO	Offensive rebounds	C	Committed fouls	BS	Blocked shots
FG	Field goals	PTS	Points scored	Tot	Total rebounds	D	Drawn fouls	+/-	Net points while on court

Game no. 11607/237  
Istanbul  
Kasımpaşa Spor Kompleksi

18.03.2017 18:40  
(Local time)

## PLAY BY PLAY

**50 - 47**

(10-8, 17-14, 14-11, 9-14)

### Starters

DELOITTE: 8. T. Cingöz, 10. S. Gebendirisli, 11. S. Pekcan, 12. D. Dövüşken, 21. K. Can  
SCHNEIDER ELECTRIC: 1. Y. Çakmak, 12. M. Sağlam, 13. H. Şençicek, 33. M. Copur, 55. E. Yılmaz

### Quarter 1

Game time	DELOITTE	Score	SCHNEIDER ELECTRIC
10:00			Won jump ball
09:51			13. H. Şençicek 2 points shot missed (Jump shot) 33. M. Copur Offensive rebound (1 Reb)
09:34	10. S. Gebendirisli Defensive rebound (1 Reb)		12. M. Sağlam 3 points shot missed (Jump shot)
09:26	8. T. Cingöz 3 points shot missed (Jump shot)		55. E. Yılmaz Defensive rebound (1 Reb)
09:13	11. S. Pekcan Defensive rebound (1 Reb)		13. H. Şençicek 2 points shot missed (Lay-Up)
09:00	10. S. Gebendirisli 3 points shot missed (Jump shot) 11. S. Pekcan Offensive rebound (2 Reb)		
08:49	21. K. Can 2 points shot made (Jump shot, second chance points, 2 PTS) 12. D. Dövüşken Assist (1 AS)	<b>2 - 0</b>	
08:32	21. K. Can Defensive rebound (1 Reb)		12. M. Sağlam 3 points shot missed (Jump shot)
08:15	10. S. Gebendirisli 3 points shot missed (Jump shot)		13. H. Şençicek Defensive rebound (1 Reb)
07:55		<b>2 - 2</b>	55. E. Yılmaz 2 points shot made (Lay-Up, 2 PTS) 13. H. Şençicek Assist (1 AS)
07:34	10. S. Gebendirisli 3 points shot missed (Jump shot)		13. H. Şençicek Defensive rebound (2 Reb)
07:23	10. S. Gebendirisli Defensive rebound (2 Reb)		1. Y. Çakmak 3 points shot missed (Jump shot)
07:17			Substitution: 55. E. Yılmaz OUT, 30. U. Doğan IN
06:59	21. K. Can 2 points shot missed (Jump shot)		30. U. Doğan Defensive rebound (1 Reb)
06:48	11. S. Pekcan Defensive rebound (3 Reb)		33. M. Copur 2 points shot missed (Jump shot)
06:29	21. K. Can 3 points shot missed (Jump shot)		12. M. Sağlam Defensive rebound (1 Reb)
06:12	10. S. Gebendirisli Defensive rebound (3 Reb)		12. M. Sağlam 2 points shot missed (Lay-Up)
06:08			33. M. Copur Personal foul (Player 1, Team 1) Foul drawn: 8. T. Cingöz
05:48	8. T. Cingöz 2 points shot missed (Lay-Up)		1. Y. Çakmak Defensive rebound (1 Reb)
05:46	11. S. Pekcan Personal foul (Player 1, Team 1) Foul drawn: 1. Y. Çakmak		
05:36	10. S. Gebendirisli Defensive rebound (4 Reb)		30. U. Doğan 2 points shot missed (Jump shot)
05:26	11. S. Pekcan 2 points shot made (Lay-Up, 2 PTS) 12. D. Dövüşken Assist (2 AS)	<b>4 - 2</b>	
05:13	10. S. Gebendirisli Defensive rebound (5 Reb)		13. H. Şençicek 2 points shot missed (Jump shot)
04:58	10. S. Gebendirisli Turnover (Out of bounds, 1 TO)		
04:44	10. S. Gebendirisli Personal shooting foul (Player 1, Team 2) Foul drawn: 13. H. Şençicek, 2 free throws awarded		
04:44		<b>4 - 3</b>	13. H. Şençicek Free throw made (Throw 1/2, points from turnover, 1 PTS)
04:44			30. U. Doğan Assist (1 AS)
04:44		<b>4 - 4</b>	13. H. Şençicek Free throw made (Throw 2/2, points from turnover, 2 PTS)
04:28	8. T. Cingöz 3 points shot missed (Jump shot)		13. H. Şençicek Defensive rebound (3 Reb)
04:15	21. K. Can Defensive rebound (2 Reb)		33. M. Copur 3 points shot missed (Jump shot)
03:55	8. T. Cingöz 3 points shot missed (Jump shot) Team Offensive rebound (1 Reb)		
03:53			12. M. Sağlam Personal foul (Player 1, Team 2) Foul drawn: 12. D. Dövüşken
03:47	8. T. Cingöz 3 points shot missed (Jump shot)		13. H. Şençicek Defensive rebound (4 Reb)
03:32	11. S. Pekcan Defensive rebound (4 Reb)		30. U. Doğan 2 points shot missed (Jump shot)
03:15	10. S. Gebendirisli 3 points shot missed (Jump shot)		12. M. Sağlam Defensive rebound (2 Reb)

**Quarter 1**

Game time	DELOITTE	Score	SCHNEIDER ELECTRIC
03:04	21. K. Can Personal shooting foul (Player 1, Team 3) Foul drawn: 13. H. Şençicek, 2 free throws awarded		
03:04			Substitution: 30. U. Doğan OUT, 55. E. Yılmaz IN
03:04		4 - 5	13. H. Şençicek Free throw made (Throw 1/2, 3 PTS)
03:04		4 - 6	13. H. Şençicek Free throw made (Throw 2/2, 4 PTS)
02:44	10. S. Gebendirisli 2 points shot made (Lay-Up, 2 PTS) 12. D. Dövüşken Assist (3 AS)	6 - 6	
02:28	10. S. Gebendirisli Defensive rebound (6 Reb)		55. E. Yılmaz 3 points shot missed (Jump shot)
02:14	21. K. Can 3 points shot made (Jump shot, 5 PTS) 10. S. Gebendirisli Assist (1 AS)	9 - 6	
01:51	12. D. Dövüşken Steal (1 ST)		55. E. Yılmaz Turnover (Bad pass, 1 TO)
01:38	8. T. Cingöz 3 points shot missed (Jump shot)		12. M. Sağlam Defensive rebound (3 Reb)
01:24		9 - 8	12. M. Sağlam 2 points shot made (Jump shot, 2 PTS)
00:56	10. S. Gebendirisli 3 points shot missed (Jump shot)		13. H. Şençicek Defensive rebound (5 Reb)
00:44			12. M. Sağlam 3 points shot missed (Jump shot) 55. E. Yılmaz Offensive rebound (2 Reb)
00:36			1. Y. Çakmak 3 points shot missed (Jump shot) 13. H. Şençicek Offensive rebound (6 Reb)
00:27	10. S. Gebendirisli Block (1 BS) 21. K. Can Defensive rebound (3 Reb)		13. H. Şençicek 2 points shot blocked (Lay-Up)
00:01			33. M. Copur Personal shooting foul (Player 2, Team 3) Foul drawn: 8. T. Cingöz, 3 free throws awarded
00:01	8. T. Cingöz Free throw missed (Throw 1/3)		
00:01	8. T. Cingöz Free throw missed (Throw 2/3)		
00:01	8. T. Cingöz Free throw made (Throw 3/3, 1 PTS)	10 - 8	

**Quarter 2**

Game time	DELOITTE	Score	SCHNEIDER ELECTRIC
10:00	Substitution: 12. D. Dövüşken OUT, 7. Y. Kılınç IN		
10:00			Substitution: 33. M. Copur OUT, 35. A. Doker IN
09:47			13. H. Şençicek Personal shooting foul (Player 1, Team 1) Foul drawn: 11. S. Pekcan, 2 free throws awarded
09:47	11. S. Pekcan Free throw missed (Throw 1/2)		
09:47	11. S. Pekcan Free throw missed (Throw 2/2)		13. H. Şençicek Defensive rebound (7 Reb)
09:42	21. K. Can Steal (1 ST)		13. H. Şençicek Turnover (Bad pass, 1 TO)
09:31	8. T. Cingöz 3 points shot made (Jump shot, points from turnover, 4 PTS) 11. S. Pekcan Assist (1 AS)	13 - 8	
09:07	10. S. Gebendirisli Defensive rebound (7 Reb)		12. M. Sağlam 2 points shot missed (Jump shot)
08:58	7. Y. Kılınç 3 points shot missed (Jump shot)		35. A. Doker Defensive rebound (1 Reb)
08:55	7. Y. Kılınç Personal foul (Player 1, Team 1) Foul drawn: 35. A. Doker		
08:39	10. S. Gebendirisli Block (2 BS) 10. S. Gebendirisli Defensive rebound (8 Reb)		1. Y. Çakmak 2 points shot blocked (Lay-Up)
08:26	8. T. Cingöz Turnover (Bad pass, 1 TO)		
08:13		13 - 10	13. H. Şençicek 2 points shot made (Jump shot, points from turnover, 6 PTS) 55. E. Yılmaz Assist (1 AS)
07:56	7. Y. Kılınç 3 points shot made (Jump shot, 3 PTS) 8. T. Cingöz Assist (1 AS)	16 - 10	
07:37			13. H. Şençicek 2 points shot missed (Lay-Up) 55. E. Yılmaz Offensive rebound (3 Reb)
07:29			13. H. Şençicek Turnover (Travelling, 2 TO)
07:16	8. T. Cingöz 3 points shot made (Jump shot, points from turnover, 7 PTS) 21. K. Can Assist (1 AS)	19 - 10	
07:03	7. Y. Kılınç Personal foul (Player 2, Team 2) Foul drawn: 1. Y. Çakmak		
06:59	7. Y. Kılınç Defensive rebound (1 Reb)		55. E. Yılmaz 3 points shot missed (Jump shot)
06:57	8. T. Cingöz Turnover (Travelling, 2 TO)		
06:41	11. S. Pekcan Defensive rebound (5 Reb)		35. A. Doker 2 points shot missed (Jump shot)
06:18	8. T. Cingöz 3 points shot missed (Jump shot)		35. A. Doker Defensive rebound (2 Reb)
06:01	11. S. Pekcan Defensive rebound (6 Reb)		12. M. Sağlam 2 points shot missed (Jump shot)
05:55	8. T. Cingöz 2 points shot missed (Lay-Up)		35. A. Doker Defensive rebound (3 Reb)
05:45	7. Y. Kılınç Defensive rebound (2 Reb)		55. E. Yılmaz 2 points shot missed (Jump shot)



Quarter 2

Game time	DELOITTE	Score	SCHNEIDER ELECTRIC
05:35	10. S. Gebendirisli 2 points shot made (Lay-Up, 4 PTS) 8. T. Cingöz Assist (2 AS)	<b>21 - 10</b>	
05:18	10. S. Gebendirisli Defensive rebound (9 Reb)		35. A. Doker 2 points shot missed (Jump shot)
05:09	21. K. Can Turnover (Bad pass, 1 TO)		55. E. Yılmaz Steal (1 ST)
05:07	8. T. Cingöz Personal foul (Player 1, Team 3) Foul drawn: 55. E. Yılmaz		
05:07	Timeout		
05:01			Substitution: 35. A. Doker OUT, 33. M. Copur IN
04:56			Substitution: 12. M. Sağlam OUT, 14. E. Yesilyurt IN
04:34		<b>21 - 13</b>	33. M. Copur 3 points shot made (Jump shot, points from turnover, 3 PTS) 13. H. Şenççek Assist (2 AS)
04:27	7. Y. Kılınc 3 points shot missed (Jump shot)		13. H. Şenççek Defensive rebound (8 Reb)
04:22	10. S. Gebendirisli Personal shooting foul (Player 2, Team 4) Foul drawn: 14. E. Yesilyurt, 2 free throws awarded		
04:22			14. E. Yesilyurt Free throw missed (Throw 1/2, fast break)
04:22		<b>21 - 14</b>	14. E. Yesilyurt Free throw made (Throw 2/2, fast break, 1 PTS)
04:02	10. S. Gebendirisli 3 points shot missed (Jump shot)		13. H. Şenççek Defensive rebound (9 Reb)
03:45	10. S. Gebendirisli Defensive rebound (10 Reb)		55. E. Yılmaz 2 points shot missed (Jump shot)
03:35	21. K. Can 3 points shot missed (Jump shot)		14. E. Yesilyurt Defensive rebound (1 Reb)
03:13	21. K. Can Defensive rebound (4 Reb)		13. H. Şenççek 2 points shot missed (Jump shot)
02:57	10. S. Gebendirisli 3 points shot missed (Jump shot)		1. Y. Çakmak Defensive rebound (2 Reb)
02:49			Substitution: 1. Y. Çakmak OUT, 12. M. Sağlam IN
02:49	Substitution: 10. S. Gebendirisli OUT, 6. E. Badem IN		
02:49	Substitution: 8. T. Cingöz OUT, 12. D. Dövüşken IN		
02:31	12. D. Dövüşken Steal (2 ST)		33. M. Copur Turnover (Bad pass, 1 TO)
02:16	6. E. Badem 3 points shot made (Jump shot, points from turnover, 3 PTS) 12. D. Dövüşken Assist (4 AS)	<b>24 - 14</b>	
01:58		<b>24 - 17</b>	12. M. Sağlam 3 points shot made (Jump shot, 5 PTS) 14. E. Yesilyurt Assist (1 AS)
01:29	11. S. Pekcan 3 points shot missed (Jump shot)		13. H. Şenççek Defensive rebound (10 Reb)
01:15	12. D. Dövüşken Defensive rebound (1 Reb)		13. H. Şenççek 2 points shot missed (Lay-Up)
01:02	21. K. Can Turnover (Bad pass, 2 TO)		14. E. Yesilyurt Steal (1 ST)
00:56		<b>24 - 19</b>	12. M. Sağlam 2 points shot made (Lay-Up, fast break, points from turnover, 7 PTS) 14. E. Yesilyurt Assist (2 AS)
00:38	6. E. Badem 3 points shot missed (Jump shot)		13. H. Şenççek Defensive rebound (11 Reb)
00:35	11. S. Pekcan Personal shooting foul (Player 2, Team 5) Foul drawn: 13. H. Şenççek, 2 free throws awarded		
00:35	Timeout		
00:35	Substitution: 7. Y. Kılınc OUT, 8. T. Cingöz IN		
00:35	Substitution: 12. D. Dövüşken OUT, 10. S. Gebendirisli IN		
00:35			Substitution: 33. M. Copur OUT, 35. A. Doker IN
00:35		<b>24 - 20</b>	13. H. Şenççek Free throw made (Throw 1/2, 7 PTS)
00:35	21. K. Can Defensive rebound (5 Reb)		13. H. Şenççek Free throw missed (Throw 2/2)
00:28	6. E. Badem 2 points shot missed (Lay-Up) 6. E. Badem Offensive rebound (1 Reb)		
00:26	6. E. Badem 2 points shot made (Lay-Up, second chance points, 5 PTS)	<b>26 - 20</b>	
00:26			55. E. Yılmaz Personal shooting foul (Player 1, Team 2) Foul drawn: 6. E. Badem, 1 free throws awarded
00:26	6. E. Badem Free throw made (Throw 1/1, second chance points, 6 PTS)	<b>27 - 20</b>	
00:06			13. H. Şenççek 2 points shot missed (Jump shot) 55. E. Yılmaz Offensive rebound (4 Reb)
00:04		<b>27 - 22</b>	55. E. Yılmaz 2 points shot made (Lay-Up, second chance points, 4 PTS)
00:00	6. E. Badem 3 points shot missed (Jump shot)		

Quarter 3

Game time	DELOITTE	Score	SCHNEIDER ELECTRIC
10:00			Substitution: 35. A. Doker OUT, 33. M. Copur IN
09:48			13. H. Şençicek 2 points shot missed (Jump shot)
09:39			13. H. Şençicek Offensive rebound (12 Reb)
09:29	8. T. Cingöz Defensive rebound (1 Reb)		55. E. Yılmaz 3 points shot missed (Jump shot)
09:08	6. E. Badem Turnover (Ball handling, 1 TO)		12. M. Sağlam Steal (1 ST)
09:00	21. K. Can Defensive rebound (6 Reb)		13. H. Şençicek 2 points shot missed (Lay-Up)
08:45	8. T. Cingöz Turnover (Bad pass, 3 TO)		12. M. Sağlam Steal (2 ST)
08:40		<b>27 - 24</b>	14. E. Yesilyurt 2 points shot made (Lay-Up, fast break, points from turnover, 3 PTS) 12. M. Sağlam Assist (1 AS)
08:26	6. E. Badem Turnover (Travelling, 2 TO)		
08:14	11. S. Pekcan Steal (1 ST)		33. M. Copur Turnover (Ball handling, 2 TO)
08:10	6. E. Badem 2 points shot made (Lay-Up, fast break, points from turnover, 8 PTS) 11. S. Pekcan Assist (2 AS)	<b>29 - 24</b>	
07:51	11. S. Pekcan Defensive rebound (7 Reb)		13. H. Şençicek 2 points shot missed (Lay-Up)
07:40	6. E. Badem 3 points shot made (Jump shot, 11 PTS) 21. K. Can Assist (2 AS)	<b>32 - 24</b>	
07:21	21. K. Can Defensive rebound (7 Reb)		14. E. Yesilyurt 3 points shot missed (Jump shot)
07:03	6. E. Badem 2 points shot made (Jump shot, 13 PTS) 21. K. Can Assist (3 AS)	<b>34 - 24</b>	
06:47	11. S. Pekcan Steal (2 ST)		33. M. Copur Turnover (Ball handling, 3 TO)
06:38			14. E. Yesilyurt Personal foul (Player 1, Team 1) Foul drawn: 6. E. Badem
06:38			Substitution: 33. M. Copur OUT, 35. A. Doker IN
06:28	21. K. Can 3 points shot made (Jump shot, points from turnover, 8 PTS) 10. S. Gebendirisli Assist (2 AS)	<b>37 - 24</b>	
06:06			13. H. Şençicek Turnover (Travelling, 3 TO)
06:06			Substitution: 55. E. Yılmaz OUT, 1. Y. Çakmak IN
05:54	21. K. Can 2 points shot missed (Lay-Up) 11. S. Pekcan Offensive rebound (8 Reb)		
05:48	11. S. Pekcan Turnover (Out of bounds, 1 TO)		
05:35			35. A. Doker 2 points shot missed (Lay-Up) 13. H. Şençicek Offensive rebound (13 Reb)
05:31	10. S. Gebendirisli Defensive rebound (11 Reb)		13. H. Şençicek 2 points shot missed (Lay-Up)
05:15	21. K. Can 3 points shot missed (Jump shot)		13. H. Şençicek Defensive rebound (14 Reb)
04:46		<b>37 - 26</b>	12. M. Sağlam 2 points shot made (Jump shot, 9 PTS) 14. E. Yesilyurt Assist (3 AS)
04:41	21. K. Can 3 points shot missed (Jump shot)		12. M. Sağlam Defensive rebound (4 Reb)
04:33	21. K. Can Defensive rebound (8 Reb)		35. A. Doker 3 points shot missed (Jump shot)
04:07			12. M. Sağlam Personal shooting foul (Player 2, Team 2) Foul drawn: 11. S. Pekcan, 2 free throws awarded
04:07			Substitution: 14. E. Yesilyurt OUT, 99. O. Gürhan IN
04:07	11. S. Pekcan Free throw missed (Throw 1/2)		
04:07	11. S. Pekcan Free throw missed (Throw 2/2)		13. H. Şençicek Defensive rebound (15 Reb)
03:54		<b>37 - 28</b>	13. H. Şençicek 2 points shot made (Lay-Up, 9 PTS) 99. O. Gürhan Assist (1 AS)
03:39	11. S. Pekcan 2 points shot missed (Lay-Up)		99. O. Gürhan Defensive rebound (1 Reb)
03:34	8. T. Cingöz Steal (1 ST)		12. M. Sağlam Turnover (Bad pass, 1 TO)
03:29			12. M. Sağlam Personal shooting foul (Player 3, Team 3) Foul drawn: 21. K. Can, 2 free throws awarded
03:29			Substitution: 12. M. Sağlam OUT, 30. U. Doğan IN
03:29	21. K. Can Free throw made (Throw 1/2, fast break, points from turnover, 9 PTS)	<b>38 - 28</b>	
03:29	8. T. Cingöz Assist (3 AS)		
03:29	21. K. Can Free throw missed (Throw 2/2, fast break, points from turnover)		13. H. Şençicek Defensive rebound (16 Reb)
03:17	10. S. Gebendirisli Personal foul (Player 3, Team 1) Foul drawn: 30. U. Doğan		
03:10		<b>38 - 30</b>	35. A. Doker 2 points shot made (Lay-Up, 2 PTS) 30. U. Doğan Assist (2 AS)
02:50	6. E. Badem 2 points shot blocked (Lay-Up)		13. H. Şençicek Block (1 BS) 99. O. Gürhan Defensive rebound (2 Reb)
02:42			35. A. Doker Turnover (Travelling, 1 TO)
02:26	21. K. Can 3 points shot missed (Jump shot)		1. Y. Çakmak Defensive rebound (3 Reb)



**Quarter 3**

Game time	DELOITTE	Score	SCHNEIDER ELECTRIC
02:11	11. S. Pekcan Block (1 BS) 10. S. Gebendirisli Defensive rebound (12 Reb)		30. U. Doğan 2 points shot blocked (Lay-Up)
01:58	6. E. Badem 3 points shot made (Jump shot, 16 PTS) 21. K. Can Assist (4 AS)	<b>41 - 30</b>	
01:48	10. S. Gebendirisli Steal (1 ST)		35. A. Doker Turnover (Bad pass, 2 TO)
01:39	8. T. Cingöz Turnover (Bad pass, 4 TO)		
01:36	Timeout		
01:36			Substitution: 99. O. Gürhan OUT, 33. M. Copur IN
01:25	6. E. Badem Steal (1 ST)		13. H. Şençicek Turnover (Bad pass, 4 TO)
01:15	8. T. Cingöz 3 points shot missed (Jump shot)		13. H. Şençicek Defensive rebound (17 Reb)
00:56	6. E. Badem Personal shooting foul (Player 1, Team 2) Foul drawn: 30. U. Doğan, 2 free throws awarded		
00:56		<b>41 - 31</b>	30. U. Doğan Free throw made (Throw 1/2, 1 PTS)
00:56			33. M. Copur Assist (1 AS)
00:56	6. E. Badem Defensive rebound (2 Reb)		30. U. Doğan Free throw missed (Throw 2/2)
00:54			1. Y. Çakmak Personal foul (Player 1, Team 4) Foul drawn: 6. E. Badem
00:36	8. T. Cingöz 3 points shot missed (Jump shot)		55. E. Yılmaz Defensive rebound (5 Reb)
00:31		<b>41 - 33</b>	30. U. Doğan 2 points shot made (Lay-Up, fast break, 3 PTS)
00:31			Substitution: 35. A. Doker OUT, 55. E. Yılmaz IN
00:16	8. T. Cingöz Turnover (Bad pass, 5 TO)		
00:13			Timeout
00:13	Substitution: 8. T. Cingöz OUT, 12. D. Dövüşken IN		
00:07	21. K. Can Personal foul (Player 2, Team 3) Foul drawn: 55. E. Yılmaz		
00:00			13. H. Şençicek 3 points shot missed (Jump shot)
00:00			33. M. Copur Offensive rebound (2 Reb)
00:00			33. M. Copur 2 points shot missed (Lay-Up)

**Quarter 4**

Game time	DELOITTE	Score	SCHNEIDER ELECTRIC
09:42	11. S. Pekcan 2 points shot missed (Lay-Up)		55. E. Yılmaz Defensive rebound (6 Reb)
09:36	12. D. Dövüşken Personal shooting foul (Player 1, Team 1) Foul drawn: 30. U. Doğan, 2 free throws awarded		
09:36		<b>41 - 34</b>	30. U. Doğan Free throw made (Throw 1/2, fast break, 4 PTS)
09:36			55. E. Yılmaz Assist (2 AS)
09:36	12. D. Dövüşken Defensive rebound (2 Reb)		30. U. Doğan Free throw missed (Throw 2/2, fast break)
09:23	21. K. Can 2 points shot made (Lay-Up, 11 PTS) 10. S. Gebendirisli Assist (3 AS)	<b>43 - 34</b>	
09:09			55. E. Yılmaz 2 points shot missed (Jump shot) 13. H. Şençicek Offensive rebound (18 Reb)
09:06		<b>43 - 36</b>	13. H. Şençicek 2 points shot made (Lay-Up, second chance points, 11 PTS)
09:06	21. K. Can Personal shooting foul (Player 3, Team 2) Foul drawn: 13. H. Şençicek, 1 free throws awarded		
09:06	Team Defensive rebound (2 Reb)		13. H. Şençicek Free throw missed (Throw 1/1, second chance points)
08:49	6. E. Badem 3 points shot made (Jump shot, 19 PTS) 12. D. Dövüşken Assist (5 AS)	<b>46 - 36</b>	
08:33			30. U. Doğan 2 points shot missed (Jump shot) 1. Y. Çakmak Offensive rebound (4 Reb)
08:23			1. Y. Çakmak 2 points shot missed (Lay-Up) 13. H. Şençicek Offensive rebound (19 Reb)
08:19			13. H. Şençicek 2 points shot missed (Lay-Up) Team Offensive rebound (1 Reb)
08:11		<b>46 - 38</b>	55. E. Yılmaz 2 points shot made (Jump shot, second chance points, 6 PTS) 1. Y. Çakmak Assist (1 AS)
07:50	21. K. Can 2 points shot missed (Jump shot)		1. Y. Çakmak Defensive rebound (5 Reb)
07:32	10. S. Gebendirisli Steal (2 ST)		55. E. Yılmaz Turnover (Ball handling, 2 TO)
07:16			1. Y. Çakmak Personal shooting foul (Player 2, Team 1) Foul drawn: 11. S. Pekcan, 2 free throws awarded
07:16	11. S. Pekcan Free throw missed (Throw 1/2, points from turnover)		

Quarter 4

Game time	DELOITTE	Score	SCHNEIDER ELECTRIC
07:16	11. S. Pekcan Free throw made (Throw 2/2, points from turnover, 3 PTS)	<b>47 - 38</b>	
07:16	12. D. Dövüşken Assist (6 AS)		
06:58		<b>47 - 40</b>	55. E. Yılmaz 2 points shot made (Lay-Up, 8 PTS) 1. Y. Çakmak Assist (2 AS)
06:35	21. K. Can 3 points shot missed (Jump shot) 11. S. Pekcan Offensive rebound (9 Reb)		
06:32			55. E. Yılmaz Personal foul (Player 2, Team 2) Foul drawn: 11. S. Pekcan
06:22	21. K. Can 3 points shot missed (Jump shot)		55. E. Yılmaz Defensive rebound (7 Reb)
06:10			Substitution: 13. H. Şençicek OUT, 12. M. Sağlam IN
06:10		<b>47 - 43</b>	12. M. Sağlam 3 points shot made (Jump shot, 12 PTS) 1. Y. Çakmak Assist (3 AS)
06:09	Timeout		
06:09	Substitution: 12. D. Dövüşken OUT, 8. T. Cingöz IN		
05:53	8. T. Cingöz 3 points shot missed (Jump shot)		Team Defensive rebound (2 Reb)
05:34			55. E. Yılmaz Turnover (Travelling, 3 TO)
05:08	6. E. Badem 3 points shot missed (Jump shot)		33. M. Copur Defensive rebound (3 Reb)
05:05			30. U. Doğan Turnover (Bad pass, 1 TO)
04:41	21. K. Can 2 points shot missed (Lay-Up)		12. M. Sağlam Defensive rebound (5 Reb)
04:22		<b>47 - 45</b>	12. M. Sağlam 2 points shot made (Jump shot, 14 PTS) 55. E. Yılmaz Assist (3 AS)
03:58	8. T. Cingöz 2 points shot made (Jump shot, 9 PTS)	<b>49 - 45</b>	
03:44	21. K. Can Defensive rebound (9 Reb)		30. U. Doğan 2 points shot missed (Lay-Up)
03:27	8. T. Cingöz 2 points shot missed (Jump shot) 6. E. Badem Offensive rebound (3 Reb)		
03:23			55. E. Yılmaz Personal foul (Player 3, Team 3) Foul drawn: 8. T. Cingöz
03:23			Substitution: 30. U. Doğan OUT, 13. H. Şençicek IN
03:18	6. E. Badem 3 points shot missed (Jump shot)		55. E. Yılmaz Defensive rebound (8 Reb)
03:15			55. E. Yılmaz 2 points shot missed (Lay-Up) 13. H. Şençicek Offensive rebound (20 Reb)
03:12			13. H. Şençicek 2 points shot missed (Lay-Up) 13. H. Şençicek Offensive rebound (21 Reb)
03:10	10. S. Gebendirisli Defensive rebound (13 Reb)		13. H. Şençicek 2 points shot missed (Jump shot)
02:56	21. K. Can 2 points shot missed (Lay-Up)		12. M. Sağlam Defensive rebound (6 Reb)
02:49	8. T. Cingöz Defensive rebound (2 Reb)		12. M. Sağlam 2 points shot missed (Jump shot)
02:32	8. T. Cingöz Turnover (Bad pass, 6 TO)		13. H. Şençicek Steal (1 ST)
02:25			33. M. Copur 3 points shot missed (Jump shot) Team Offensive rebound (3 Reb)
02:21			Substitution: 33. M. Copur OUT, 14. E. Yesilyurt IN
02:21			Timeout
02:21			Substitution: 1. Y. Çakmak OUT, 30. U. Doğan IN
02:12		<b>49 - 47</b>	12. M. Sağlam 2 points shot made (Jump shot, second chance points, points from turnover, 16 PTS) 13. H. Şençicek Assist (3 AS)
01:59	8. T. Cingöz 2 points shot missed (Lay-Up)		
01:55	Team Offensive rebound (3 Reb)		
01:52	11. S. Pekcan Personal foul (Player 3, Team 3) Foul drawn: 13. H. Şençicek		
01:40	6. E. Badem Defensive rebound (4 Reb)		55. E. Yılmaz 3 points shot missed (Jump shot)
01:37			13. H. Şençicek Personal foul (Player 2, Team 4) Foul drawn: 6. E. Badem
01:18	10. S. Gebendirisli Turnover (Ball handling, 2 TO)		55. E. Yılmaz Steal (2 ST)
01:15	6. E. Badem Personal foul (Player 2, Team 4) Foul drawn: 14. E. Yesilyurt		
01:07			14. E. Yesilyurt Turnover (Travelling, 1 TO)
00:48	8. T. Cingöz 2 points shot blocked (Lay-Up)		30. U. Doğan Block (1 BS)
00:41	11. S. Pekcan Defensive rebound (10 Reb)		14. E. Yesilyurt Defensive rebound (2 Reb)
00:15	6. E. Badem 3 points shot missed (Jump shot) Team Offensive rebound (4 Reb)		14. E. Yesilyurt 2 points shot missed (Jump shot)
00:14			Substitution: 14. E. Yesilyurt OUT, 1. Y. Çakmak IN
00:14	Timeout		

**Quarter 4**

Game time	DELOITTE	Score	SCHNEIDER ELECTRIC
00:12			1. Y. Çakmak Personal shooting foul (Player 3, Team 5) Foul drawn: 21. K. Can, 2 free throws awarded
00:12	21. K. Can Free throw made (Throw 1/2, second chance points, 12 PTS)	<b>50 - 47</b>	
00:12	21. K. Can Free throw missed (Throw 2/2, second chance points)		13. H. Şençicek Defensive rebound (22 Reb)
00:06			55. E. Yılmaz 3 points shot missed (Jump shot) 1. Y. Çakmak Offensive rebound (6 Reb)
00:02			13. H. Şençicek 3 points shot missed (Jump shot) 55. E. Yılmaz Offensive rebound (9 Reb)

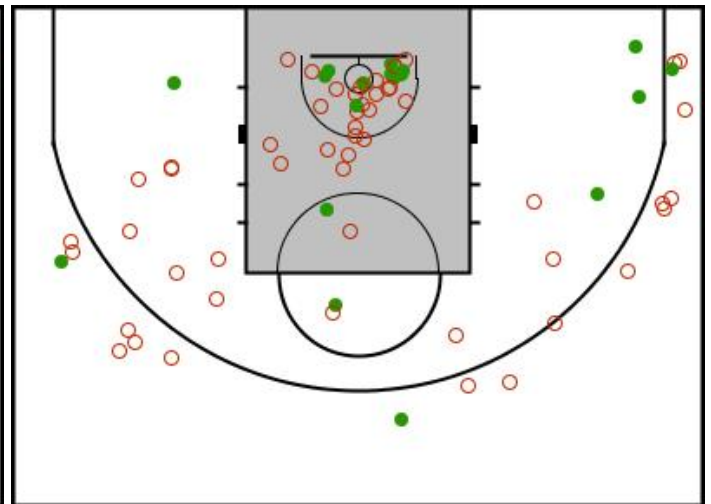
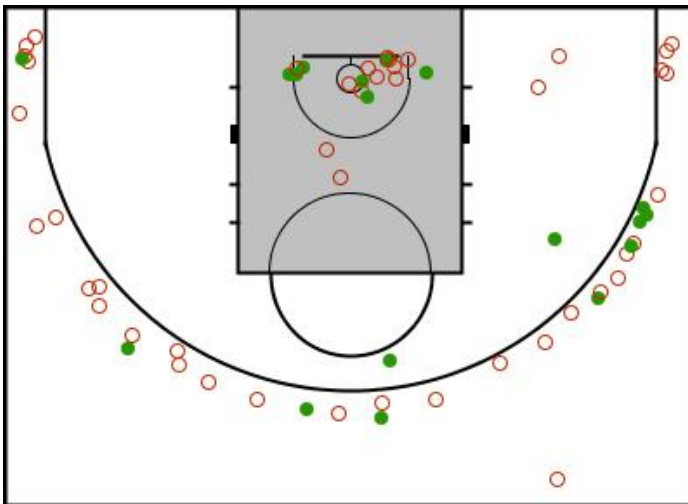
**Shot chart**

**50 - 47**

(10-8, 17-14, 14-11, 9-14)

**DELOITTE**

**SCHNEIDER ELECTRIC**



**DELOITTE**

**SCHNEIDER ELECTRIC**

